

Switch Interface Installation
Oracle FLEXCUBE Universal Banking
Release 12.2.0.0.0
[May] [2016]



Table of Contents

- 1. SWITCH INSTALLATION 1-1
 - 1.1 INTRODUCTION 1-1
 - 1.2 INSTALLING SWITCH INTERFACE 1-1

1. Switch Installation

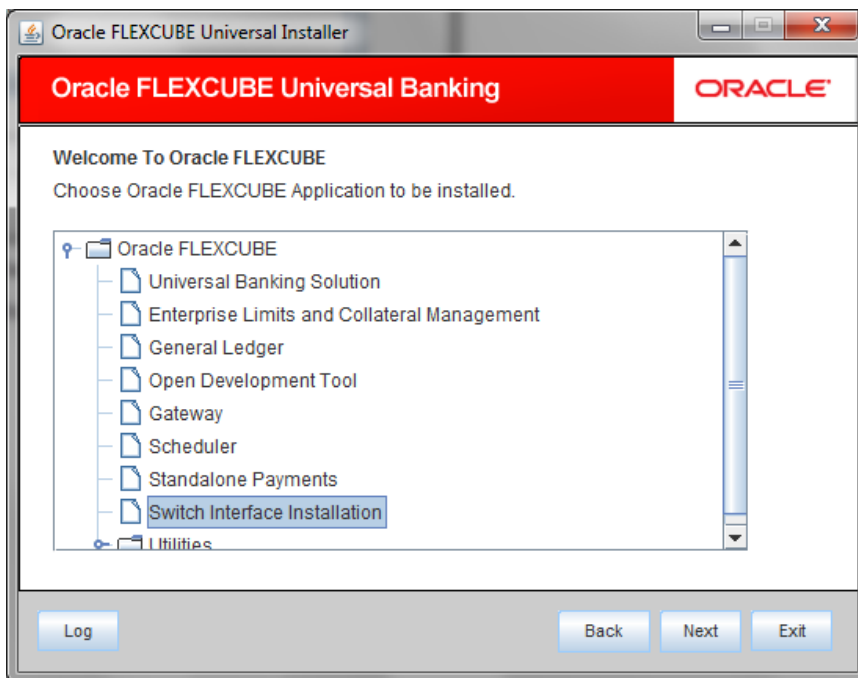
1.1 Introduction

This document explains about the switch interface installation.

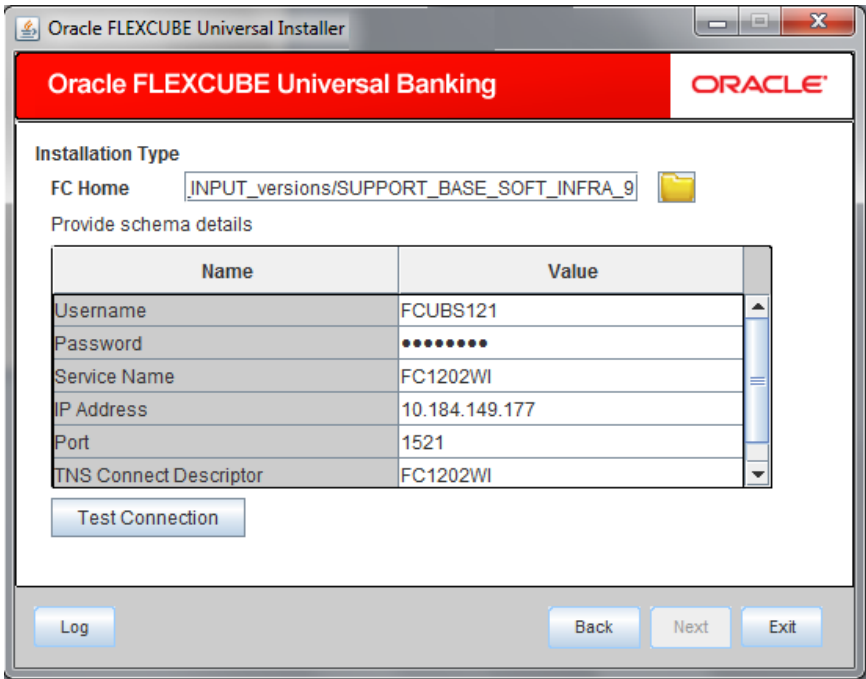
1.2 Installing Switch Interface

To install switch interface, follow the steps below:

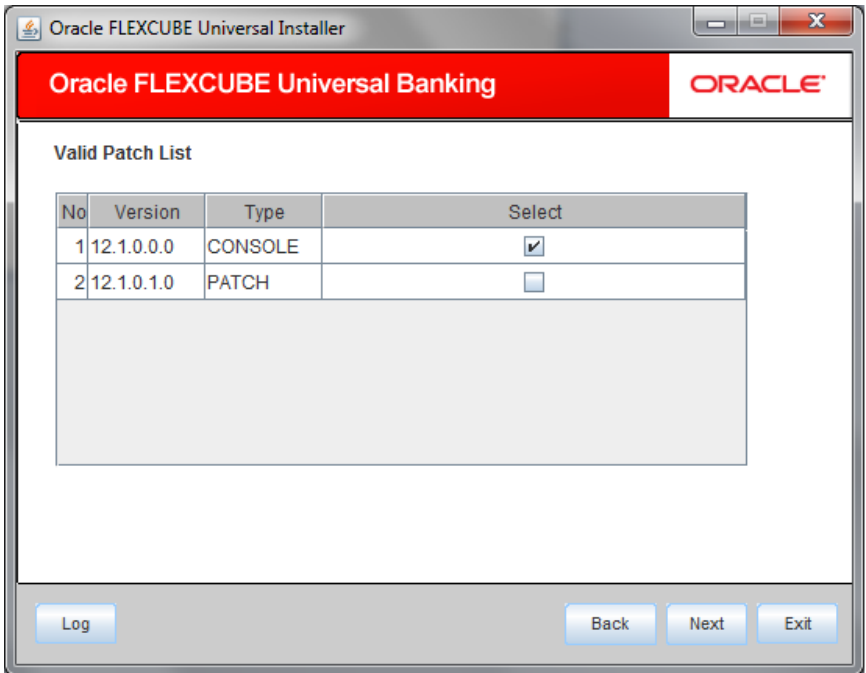
1. Run 'FCUBSInstaller.bat' batch to launch Oracle FLEXCUBE Universal Banking Solution Installer. The following screen is displayed.
2. Click 'Next' to launch Oracle FLEXCUBE Universal Banking Solution Installer.



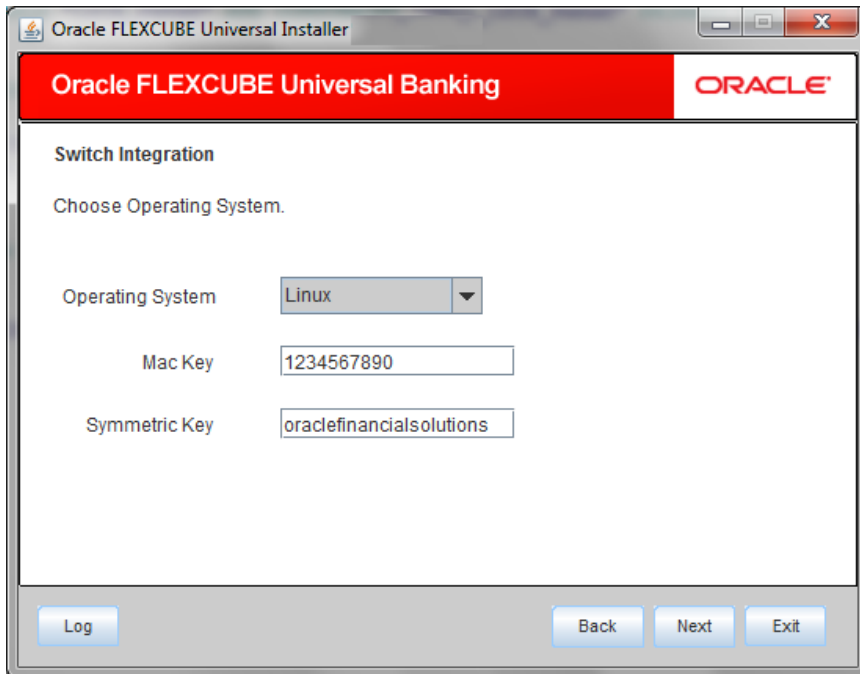
3. Select 'Switch Interface Installation'.
4. Click 'Next'. The following screen is displayed.



- Based on the FCHOME chosen, the valid list of deployable units are listed as shown in the next screen:



Choose the required set of Main and Patch releases. Click Next. Following screen is shown.



6. Specify the following details:

Operating System

Select the operating system from the adjoining drop-down list.

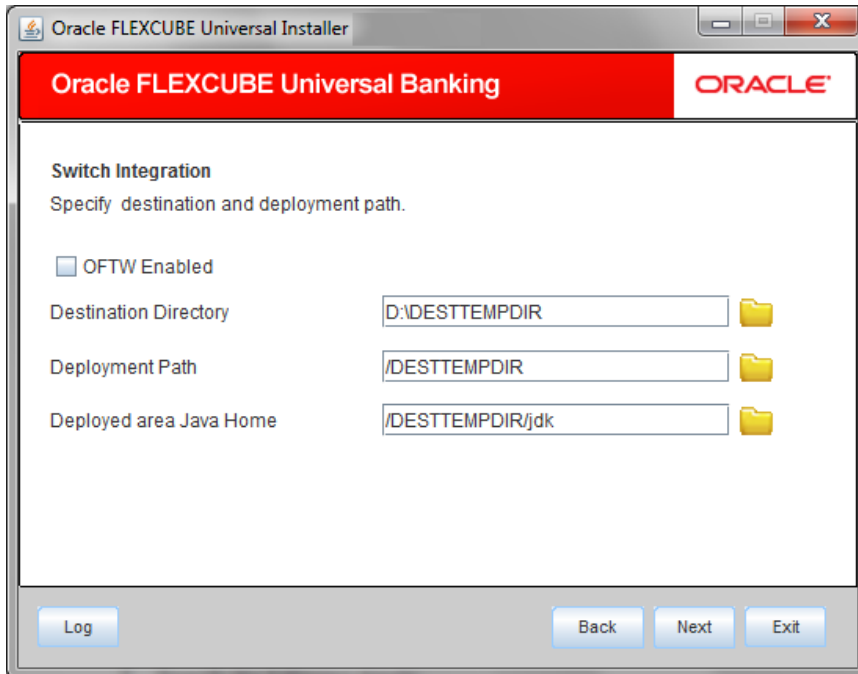
Mac Key

Give Mac key which is used in switch Integration application.

Symmetric Key

Symmetric Key is used to encryption and decryption.

7. Click 'Next'. The following screen is displayed.



8. Specify the following details:

Destination Directory

Specify the destination directory. You can use the directory button to browse to the location. For example, D:\Testing\source\dest.

Deployment Path

Specify the deployment Path . You can use the directory button to browse to the location. For example, D:\Testing\source\deploy.

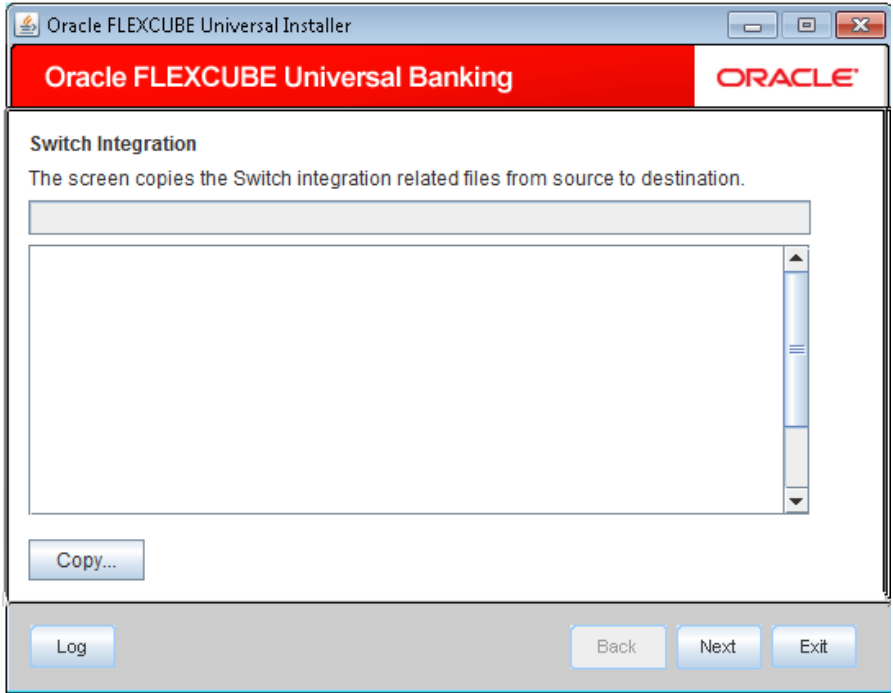
Deployed area Java Home

Specify the deployed area java home. You can use the directory button to browse to the location. For example, D:\Testing\jdk.

OFTW Enabled

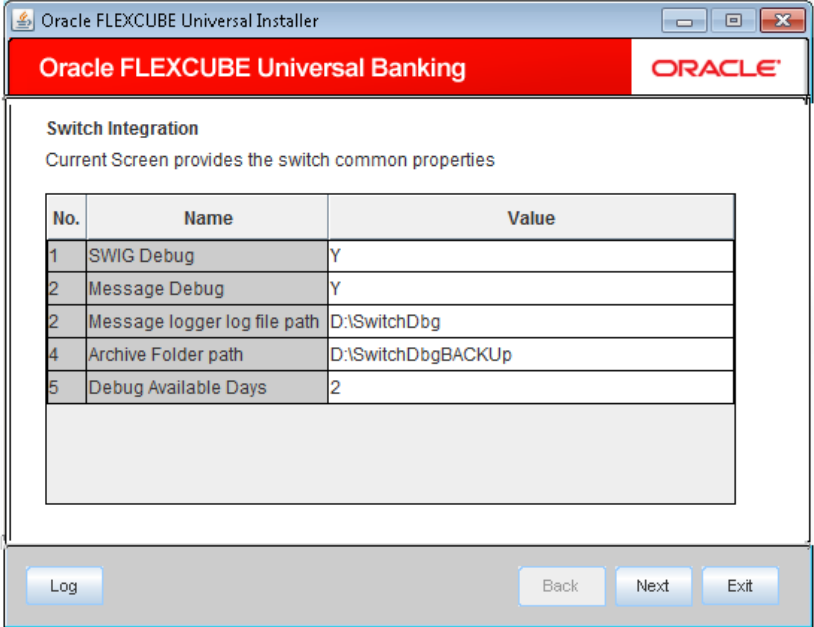
Specify whether OFTW inclusion is required or not.

9. Click 'Next'. The following screen is displayed.



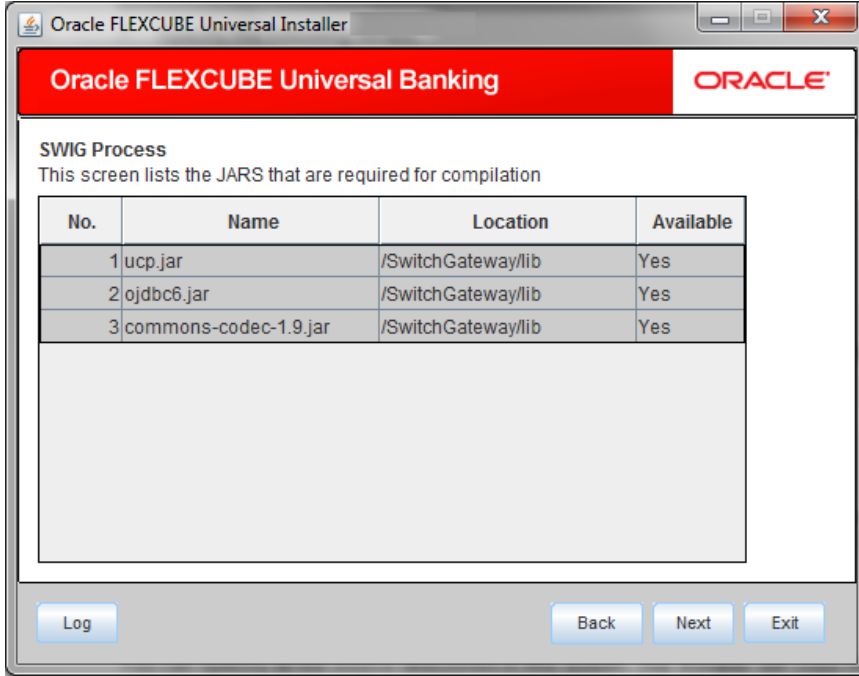
10. Click 'Copy' to copy the switch integration related files from the source to destination.

11. Click 'Next'. The following screen is displayed.

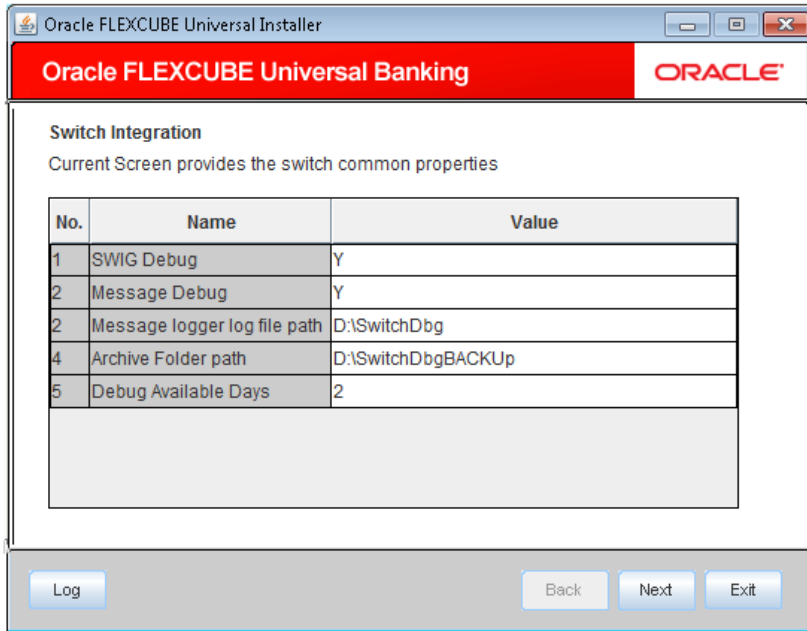


12. Click 'Next'. The following screen is displayed.

This screen shows list of jars required for compilation. This screen will be available in SOFT mode only. Availability of jars in respective location will be shown in Available column as Yes/No.



13. Click 'Next'. The following screen is displayed.



14. Specify the following general switch properties details:

SWIG Debug

Select 'Y' if debug is required. If you select 'Y', then the exceptions generated in the SWIG java layer will be recorded in the Message Logger log file path.

Message Debug

Select 'Y' if Message debug is required. If you select 'Y', then the request and response messages will be recorded in Message Logger log file path.

Message Logger File Path

Specify the path for log files to be written.

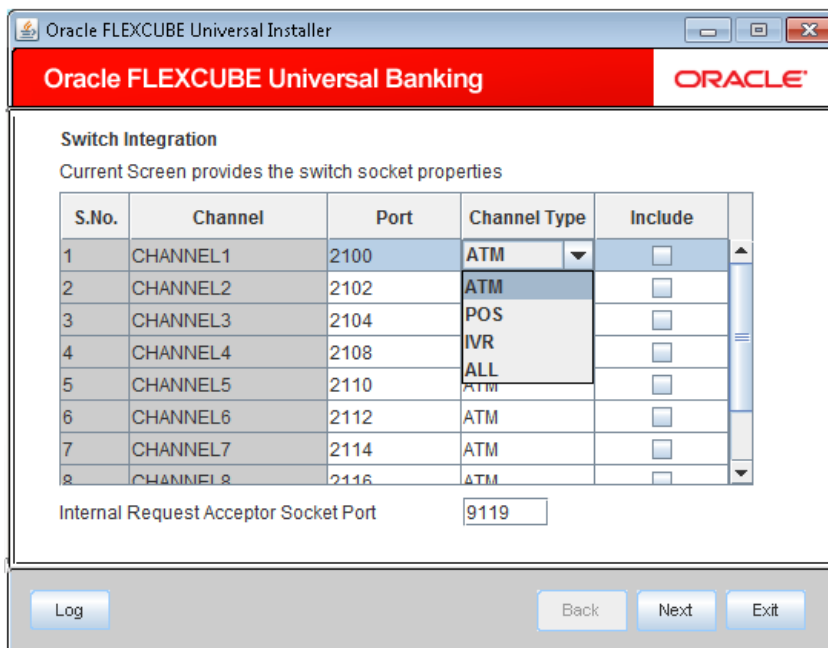
Archive Folder Path

The system displays the folder path where all the logged files are archived; however you can modify this, if required.

Debug Available Days

The system displays the number of days after which the debug files will be archived; however, you can modify this, if required.

15. Click 'Next'. The following screen is displayed.



16. Configure the channels that are used.

Port

The system displays the port number of the corresponding channel to which the switch can connect to send/receive transactions.

Channel Type

Select the channel name to be used as an identifier in Switch to send/receive transactions. Select one of the following:

- ATM
- POS
- IVR
- ALL

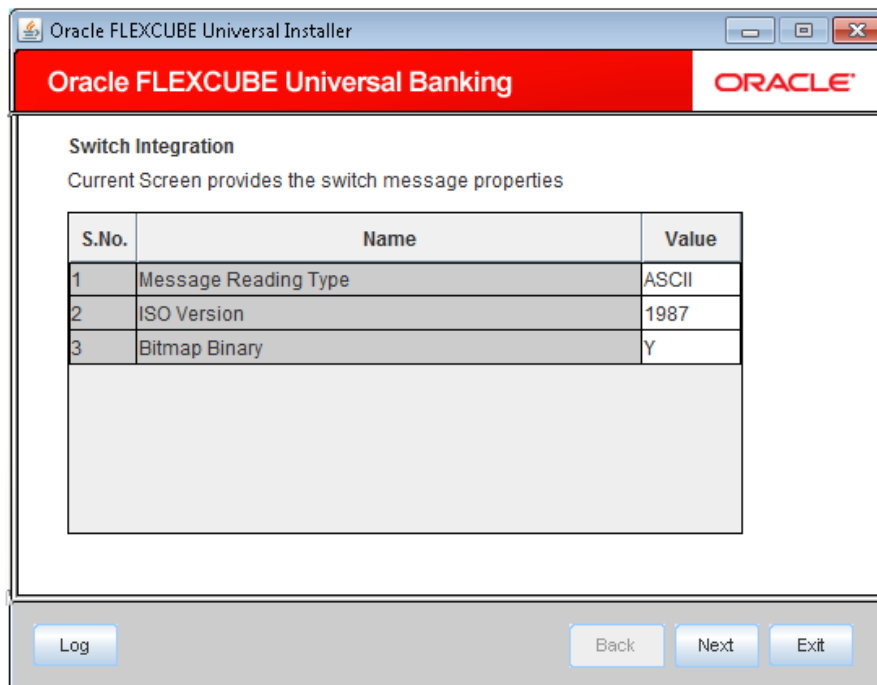
Include

If you check this box, the switch can communicate with the corresponding port. If unchecked, the Switch cannot communicate with the corresponding port.

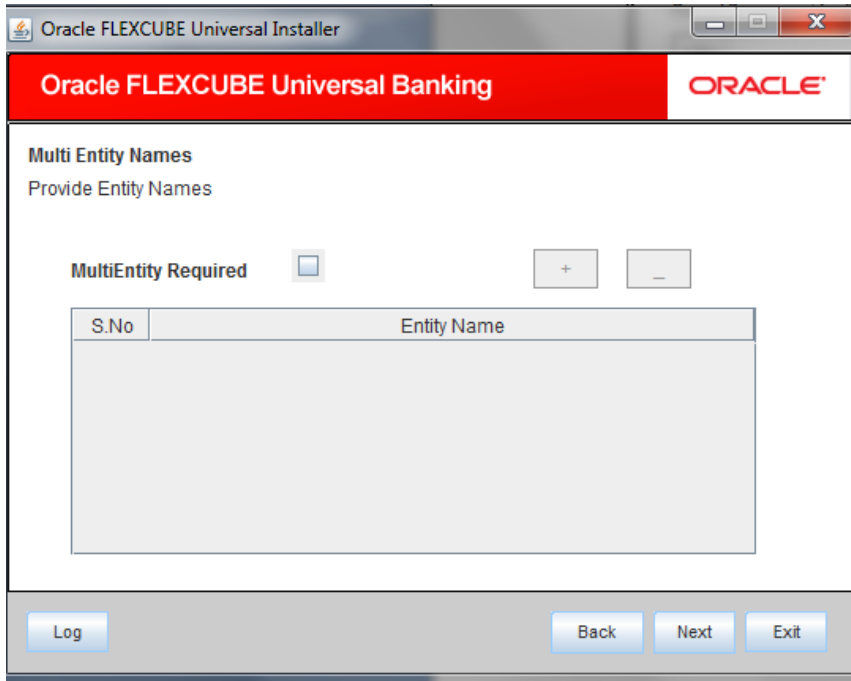
Internal Request Acceptor Socket Port

System displays the internal request acceptor socket port number; however you can modify this, if required.

17. Click 'Next'. The following screen is displayed.



18. There is an option to provide Multi entity entries.



19. Specify the following details to configure the message type.

Message Reading Type

The system displays the way in which messages are read. This can be either 'ASCII' or 'Binary'; however you can modify this, if required.

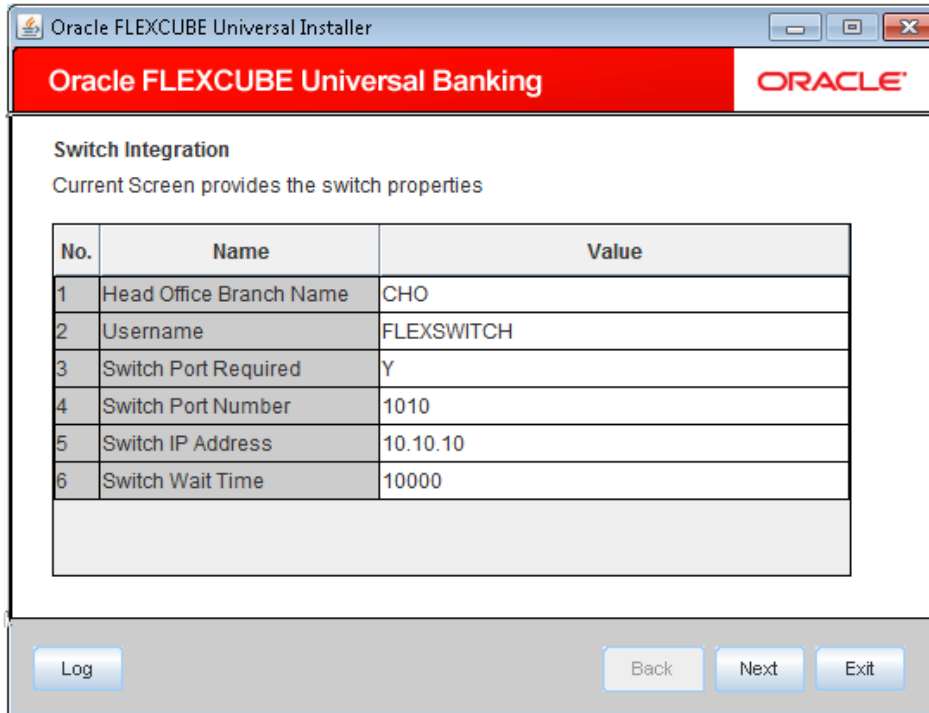
ISO Version

The system displays the ISO version using which the Switch server will be communicating with our system; however you can modify this, if required.

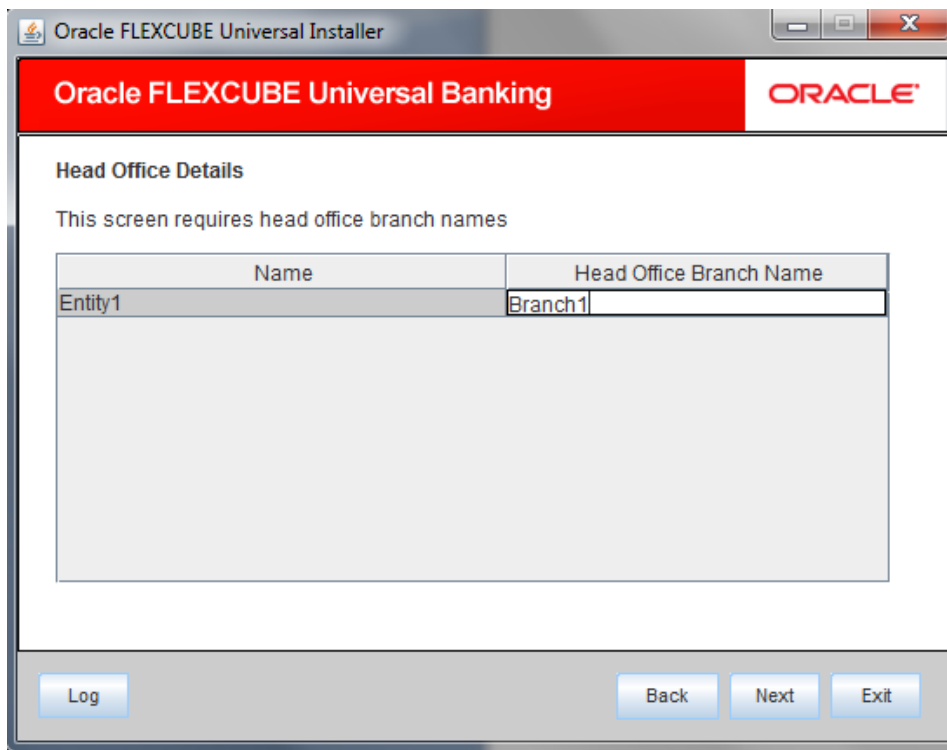
Bitmap Binary

The system displays the bitmap type of the message. This can be 'Binary Bitmap' or 'ASCII Bitmap'. Select 'N' to indicate the 'ASCII Bitmap'; whereas, select 'Y' to indicate the 'Binary Bitmap'.

20. Click 'Next'. The following screen is displayed.



22. This screen provides option to enter the office branch names.



23. Specify the following details to configure the Switch properties.

Head Office Branch Name

The system displays the head office branch name; however you can modify this, if required.

Username

The system displays the Oracle FLEXCUBE user name that has all the rights.

Switch Port Required

The system displays if the Switch port is required. If 'Y' is selected, then SWIG can communicate with Switch Port Number, if 'N' is selected, then SWIG cannot communicate with Switch Port Number. You can modify this, if required.

Switch Port Number

The system displays the Switch Server Port Number to which our application will send Sign On/Sign Off Message; however you can modify this, if required.

Switch IP Address

The system displays the Switch Server IP Address to which our application will send Sign On/Sign Off Message; however you can modify this, if required.

Switch Wait Time

The system displays the time period the application will wait for the response from the switch for Sign On/Sign Off message. You can modify this, if required.

24. Click 'Next'.

The following screen is displayed.

No.	Name	Value
1	Initial Pool Size	5
2	Maximum Pool Size	50
3	Minimum Pool Size	5
4	JDBC Url	<jdbc_url>
5	Databse Username	user
6	Database Password	*****

25. Specify the jndi for the branch.

The screenshot shows the Oracle FLEXCUBE Universal Installer window. The title bar reads "Oracle FLEXCUBE Universal Installer". The window has a red header with "Oracle FLEXCUBE Universal Banking" and the Oracle logo. Below the header, the text "Head Office Details" is displayed, followed by "This screen requires head office branch details". A table with four columns is shown: "Entity", "JDBC URL", "User Name", and "Password". The first row contains "Entity1", "jdbc:oracle:thin:@//10.10.10.10:15...", and empty cells for "User Name" and "Password". Below the table is a large empty rectangular area. At the bottom of the window, there are four buttons: "Log", "Back", "Next", and "Exit".

Entity	JDBC URL	User Name	Password
Entity1	jdbc:oracle:thin:@//10.10.10.10:15...		

26. Specify the following details.

Initial Pool Size

The system displays the number of required connections as given by the parameter. The connections are created when it is initialized. This reduces the waiting time.

Maximum Pool Size

The system displays the maximum number of connections that can be used.

Minimum Pool Size

This parameter indicates the minimum number of connections to be used. If the total count of the number of available connections and the number of connections in use is less than the minimum pool size specified here, then the connection is returned to the pool.

JDBC Uri

The system displays the URL to database location. It is stored in encrypted format.

For example,

JDBC URL for single instance:

```
jdbc:oracle:thin:@<ip_address>:<port_no>:<Instance_Name>
```

JDBC Uri for RAC Database:

```
jdbc:oracle:thin:@(DESCRIPTION=(ADDRESS_LIST=(ADDRESS=(PROTOCOL=TCP)(HOST=<host_name>)(PORT=<port_no>)))(CONNECT_DATA=(SERVICE_NAME=<service_name>)))
```

User Name

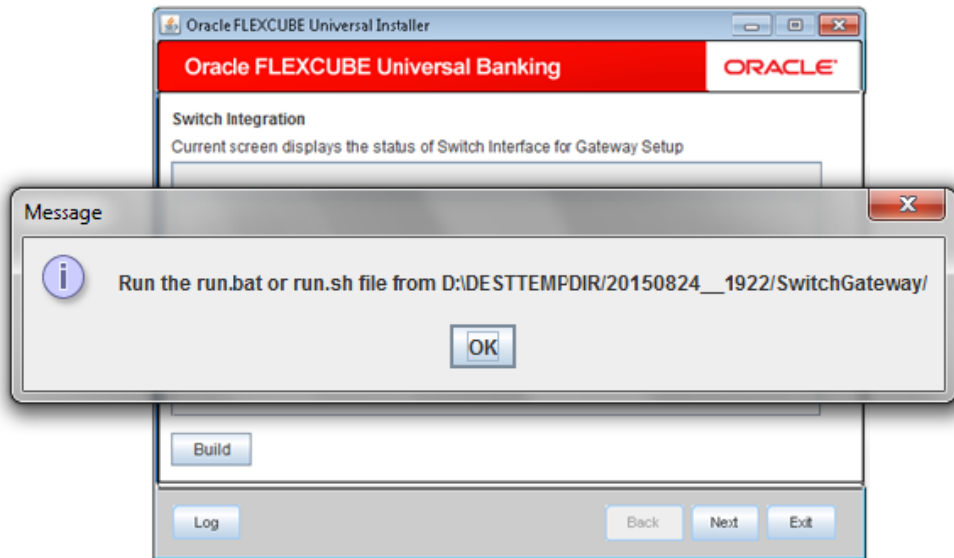
The system displays the username for the JDBC URL. It is stored in encrypted form.

Password

The system displays the password for JDBC URL stored in encrypted form.

27. Click 'Next'.

The following screen is displayed.



28. Click 'Build' to start building the process.

29. Upon successful Build, Pop up showing run.bat/run.sh file to run will be shown.



Switch Interface Installation
[May] [2016]
Version 12.2.0.0.0

Oracle Financial Services Software Limited
Oracle Park
Off Western Express Highway
Goregaon (East)
Mumbai, Maharashtra 400 063
India

Worldwide Inquiries:
Phone: +91 22 6718 3000
Fax: +91 22 6718 3001
www.oracle.com/financialservices/

Copyright © [2007], [2016], Oracle and/or its affiliates. All rights reserved.

Oracle and Java are registered trademarks of Oracle and/or its affiliates. Other names may be trademarks of their respective owners.

U.S. GOVERNMENT END USERS: Oracle programs, including any operating system, integrated software, any programs installed on the hardware, and/or documentation, delivered to U.S. Government end users are "commercial computer software" pursuant to the applicable Federal Acquisition Regulation and agency-specific supplemental regulations. As such, use, duplication, disclosure, modification, and adaptation of the programs, including any operating system, integrated software, any programs installed on the hardware, and/or documentation, shall be subject to license terms and license restrictions applicable to the programs. No other rights are granted to the U.S. Government.

This software or hardware is developed for general use in a variety of information management applications. It is not developed or intended for use in any inherently dangerous applications, including applications that may create a risk of personal injury. If you use this software or hardware in dangerous applications, then you shall be responsible to take all appropriate failsafe, backup, redundancy, and other measures to ensure its safe use. Oracle Corporation and its affiliates disclaim any liability for any damages caused by use of this software or hardware in dangerous applications.

This software and related documentation are provided under a license agreement containing restrictions on use and disclosure and are protected by intellectual property laws. Except as expressly permitted in your license agreement or allowed by law, you may not use, copy, reproduce, translate, broadcast, modify, license, transmit, distribute, exhibit, perform, publish or display any part, in any form, or by any means. Reverse engineering, disassembly, or decompilation of this software, unless required by law for interoperability, is prohibited.

The information contained herein is subject to change without notice and is not warranted to be error-free. If you find any errors, please report them to us in writing.

This software or hardware and documentation may provide access to or information on content, products and services from third parties. Oracle Corporation and its affiliates are not responsible for and expressly disclaim all warranties of any kind with respect to third-party content, products, and services. Oracle Corporation and its affiliates will not be responsible for any loss, costs, or damages incurred due to your access to or use of third-party content, products, or services.